

# currenza<sup>®</sup> SMv2 / MSMv2

## High end bill validation

currenza



MSMv2

Fast transactions thanks to high first time acceptance rate of more than 97%

Patented sensor systems for best fraud bills rejection and anti stringing protection

Tool free access for high service friendliness and fast maintenance



**CRANE**<sup>®</sup> PAYMENT SOLUTIONS

Crane Payment Solutions GmbH  
Zum Fruchthof 6 • 21614 Buxtehude • Germany  
Phone: +49 (0) 41617290 • Fax: +49 (0) 4161729115  
E-Mail: info@craneps.com • Web: www.craneps.com



# High end bill validation

## currenza<sup>®</sup> SMv2 / MSMv2

Through innovation the CashCode currenza<sup>®</sup> SMv2 & MSMv2 offer maximum flexibility and reliability.

MSMv2



SMv2

### Reliability:

- Patented sensor systems guarantee highest fraud bill rejection
- Optical anti stringing protection minimizes bill theft
- Low operating costs due to beltless roll transport system
- Self calibrating sensors making optical adjustments redundant
- 4 way bill validation for easy use
- Drop proof cassette in different sizes available

### Profitability:

- Short transaction times due to complete transport cycle under 2.5s
- High first time insertion rate of approx. 97% guarantees customer satisfaction
- Fast currency updates via Blue Chip<sup>™</sup> Sim Card technology
- Tool free access for high service friendliness and fast maintenance

### Flexibility:

- Different configuration possible: up stack or down stack models
- Blue arrow lights: to attract customers at vending machines
- Green running light: power optimized for tobacco machines
- Metal: Vandalism protection for outdoor applications

### Models:

- 2 different models aligned to operation application
- SMv2: for bills with maximum width of about 66mm - e.g. 5 EURO & 10 EURO
- MSMv2: for bills with flexible width between 62-78mm - z.B. 5,10 EURO & 20 EURO
- 24V Version or 12 V battery version with lowest power consumption – for tobacco applications

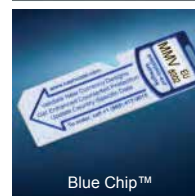
With the currenza<sup>®</sup> bill validators your operation will be more reliable and profitable.



Bill validation area



Front bezels



Blue Chip<sup>™</sup>



Cassette

Bill width validated	currenza <sup>®</sup> SMv2: 66 mm currenza <sup>®</sup> MSMv2: 62 – 78 mm
Bill insertion	4 way
Escrow	1 bill
Validation rate	97% or higher
Complete transport cycle	Less than 2.5s
Sensors	Auto-calibrating multi-color optical and inductive
Security sensors	Cross Channel & dual entry
Front bezels	Blue, Green, Red, Metal
Interfaces 12V	MDB with Sleep Mode, Pulse, Serial o. bidirectional (with TTL o. RS232)
Interfaces 24V	MDB, Cctalk, Pulse
Operating voltage	12V DC; 2.0A (peak); 24V AC or 15-42.5 V DC: 1.0 A / Sleep mode Version-10µA bei 100 – 200 mA in normal operation
Operating temperature	24V: 0° C bis 50° C 12V: -18° C to 60° C
Validation MTBF	750000 cycles
Firmware Updates	BlueChip <sup>™</sup> Sim Card o. Download
Dimensions (W x H x D)	104 x 279 x 115mm (300 cassette)
Cassettes	300, 400 or 600