

Small footprint: big capacity

The capacity to deliver



- High-security, high-speed
- Field-proven reliability
- Range of bowl options

Made with high-performance engineering plastics, the Compact Hopper Range is a high-security, high-speed, single-denomination coin payout unit with a range of bowl configurations, offering a large capacity within a small footprint, which means that it can be fitted in many applications, including retrofit. With over a million units already supplied to the amusement, ticketing, banking (ATMs), post office, change and specialist-vending markets, its anti-jam, field-proven reliability is second to none, making it the industry standard.

Money Controls



CRANE PAYMENT INNOVATIONS

CPI Headquarters
3222 Phoenixville Pike, Suite 200
Malvern, PA 19355 USA
Office: +1 610 430 2700 E-mail: sales@CranePI.com
For additional office locations or product information
please visit www.CranePI.com

Compact Hopper

If security, speed and reliability are important qualities for your product, then the Compact Hopper Range represents a first choice for virtually all applications.

Compact

The Compact Hopper Range is suitable for 95% of the world's coins, including a specific Euro build covering 50¢, €1 and €2 coins. Reliability is maintained with the unique automatic clearance of jams, usually due to damaged coins, by temporarily auto-reversing the motor. Payout is fast and can be in 'single' or 'stream' mode, at a payout rate of up to 10 coins per second, and can be from either a side, rear*¹ or front exit, selected by simple orientation of the motor assembly within the modular construction. The range includes the Standard Bowl, Extended Bowl, High Capacity Bowl, Square Bowl and Base. These meet the increasing need for greater flexibility and capacity making the Compact Hopper Range suitable for use in a wide range of machines

The Compact Hopper Range offers a choice of interface: the ccTalk serial interface option, the most secure hopper interface available in its class today, offers increased security, improved diagnostics and more detailed error & status reporting – a major benefit for network-managed machines. Encrypted payout commands prevent fraudulent activity, while multiple optical sensors and a stealth light-guide (additional security against external light sources) ensure the correct number of coins are paid out. Security can be enhanced with an option to clamp the motor windings during its idle state to prevent it from being driven by unauthorised power sources. A built-in coin counter allows the serial hopper to record and audit the total number of coins dispensed, details of which can be communicated to the host machine using ccTalk. Alternatively, for situations where a serial interface host is not available, the hopper can be supplied with a standard parallel interface.

Technical Data: Compact Hopper

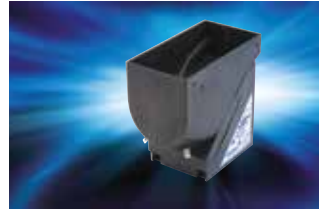
GENERAL

Dimensions mm (in) (HxWxD)			
Compact Std. Bowl	150 (5.9) x 85 (3.4) x 145 (5.7)		
Compact Ext. Bowl	150 (5.9) x 85 (3.4) x 158 (6.2)		
Compact High Capacity Bowl	150 (5.9) x 172 (6.7) x 147 (5.8)		
Compact Square Bowl	150 (5.9) x 115 (4.5) x 121(4.8)		
Coin Capacity ^{*2}			
Std. Bowl:	280 x €1	260 x £1	370 x US 25¢
Ext. Bowl:	365 x €1	350 x £1	480 x US 25¢
High Cap. Bowl:	750 x €1	600 x £1	900 x US 25¢
Square Bowl:	440 x €1	330 x £1	500 x US 25¢
Square Bowl ext.	+280	+260	+370
Coin Dimensions Range mm(in)			
Diameter:	15 to 29.5 (0.591 to 1.162)		
Thickness:	1.25 to 3.2 (0.050 to 0.126)		
Coin Payout Rate			
Stream mode:	6 to 8 coins per sec		
Single mode:	2 coins per second		
Voltage: (V DC) Nom/Min/Max			
Parallel 12V	12/10/14		
Parallel 24V	24/19/26		
Serial	24/19/26		
Current typ.: (A) Empty/Full/Surge			
Parallel 12V	0.60/1.50/5.00		
Parallel 24V	0.35/0.90/3.90		
Serial 24V	0.35/0.90/3.90		
Communications Interface: Parallel or Serial (ccTalk)			
Security	Optical protection:	Multiple sensors and stealth light-guide	
	Motor protection:	Motor clamped in idle state (Serial version only)	
Unauthorised use (optional) PIN code protection (Serial version only)			
Temperature range:	Operating:	0°C to 60°C	
	Storage:	-20°C to 70°C	
Humidity range: Up to 75% RH non-condensing			

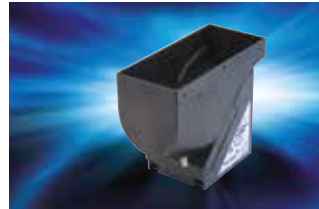
*¹ Except with High Capacity Bowl *² Coin capacities are approximate and not a guaranteed figure

Key Features:

- Small footprint
- Multiple optical sensors and stealth light guide
- Auto-reverse for jam clearance
- High and low level sensing
- Interchangeable discs for different size coins
- Range of discs to suit different geographic regions
- Range of bowl options: Standard Bowl, Extended Bowl, High Capacity Bowl, Square Bowl and Base
- Fast payout, in 'single' or 'stream' mode
- Choice of ccTalk serial interface or standard parallel interface
- Resistant to fraud, high security
- Suitable for multiple applications
- Field-proven reliability – over 1 million supplied worldwide
- Optimum in-service time
- Truly global – handles 95% of world's coins
- Fast payout – end-user satisfaction
- Easily extendible coin capacity



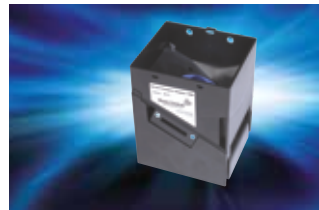
Standard Bowl



Extended Bowl



High Capacity Bowl



Square Bowl



Square Bowl 2x Ext